

**Sierra Vista**

4711 S Highway 92  
1-800-559-9291 Phone  
520-458-9293 Fax



**COMMERCIAL POOL CARE DIVISION**

**Northwest**

6320 N Oracle Rd  
520-797-2299 Phone  
520-797-9293 Fax

**Central**

2512 N Campbell Ave  
520-795-8240 Phone  
520-327-1142 Fax

**Main Office/Eastside**

7960 E 22nd St  
520-886-1211 Phone  
520-886-6364 Fax

**Northeast**

9155 E Tanque Verde Rd  
520-749-9155 Phone  
520-760-0035 Fax

PATIO'S NUMBER	ITEM KEY	PUREX CLEAN & CLEAR PLUS MODELS 240, 360, 420, 500, & 520	MANUFACTURER NUMBER
13-0201	1	Pressure Gauge	53003201
13-0314	2	High Flow Manual Relief Valve	98209800
SP6-2477	3	Hose & Retainer Clips	98201200
	4	Compression Spring	56633900
		Compression Spring	178616
	5	Top Manifold Assembly, (240 Sq. Ft.)	170026
SP3-5676		Top Manifold Assembly, (320 thru 520 Sq. Ft.)	170027
SP1-7980	6	240 Sq. Ft. Cartridge Element, (Requires 4)(C-7469)	173572
13-7470		320 Sq. Ft. Cartridge Element, (Requires 4)(C-7470)	173573
300-0250		360 Sq. Ft. Cartridge Element, (Requires 4)(C-7476)	173574
13-7471		420 Sq. Ft. Cartridge Element, (Requires 4)(C-7471)	173576
		520 Sq. Ft. Cartridge Element, (Requires 4)(C-7498)(Before 11/98)	173577
13-7472		520 Sq. Ft. Cartridge Element, (Requires 4)(C-7472)(After 11/98)	173578
	7	Air Bleed Tube Assembly, (240 Sq. Ft.)	170030
		Air Bleed Tube Assembly, (360 thru 420 Sq. Ft.)	55024800
		Air Bleed Tube Assembly, (520 Sq. Ft.)	55028400
		Air Bleed Tube Assembly, (520 Sq. Ft.)	178583
	8	Bottom Manifold	56626800
SP3-5977		Bottom Manifold & Pipe Assembly - Outlet	170035
		Bottom Manifold	170040
SP3-5134	9	Gasket, Bottom Manifold	57000300
26-1014	10	Tank O-Ring	39010200
SP1-6441	11	Tension Control Clamp Kit	190003
SP1-7694	12	Filter Clamp Washer	53006300
13-0821	13	Barrel Nut & Spring Assembly	53108900
	14	Bulkhead Baffle Assembly	55035000
WPS-0375		Bulkhead Baffle Assembly	190039
TSC-0372	15	Lower Bulkhead O-Ring	86006900
SP5-1170	16	Bulkhead Union (Set of 2)	98960311
13-0349		Bulkhead Union, 1-1/2"x2" (Set of 2, White)	271096
600-0005		Bulkhead Union, 1-1/2"x2" (Set of 2, White)	270004
	17	Pipe Assembly, Outlet	59019200
SP3-5977		Pipe Assembly, Outlet/Bottom Manifold Assembly	170035
		Pipe Assembly, Outlet	170025
SP3-3176	18	Drain Cap Gasket	86300500
		Drain Cap O-Ring	51000500
SP3-5220	19	Drain Cap Gasket	51516200
26-1026		Drain Plug w/O-Ring, 1-1/2"	86202000
	20	Tank Lid Assembly, (240 Sq. Ft.)	170023
		Tank Lid Assembly, (320 Sq. Ft.)	170024
		Tank Lid Assembly, (360 Sq. Ft.)	178552
		Tank Lid Assembly, (420 Sq. Ft.)	178551
		Tank Lid Assembly, (420 Sq. Ft.)	178581
		Tank Lid Assembly, (520 Sq. Ft.)	178550
		Tank Lid Assembly, (520 Sq. Ft.)	178582

Sierra Vista  
 4711 S Highway 92  
 1-800-559-9291 Phone  
 520-458-9293 Fax



COMMERCIAL POOL CARE DIVISION

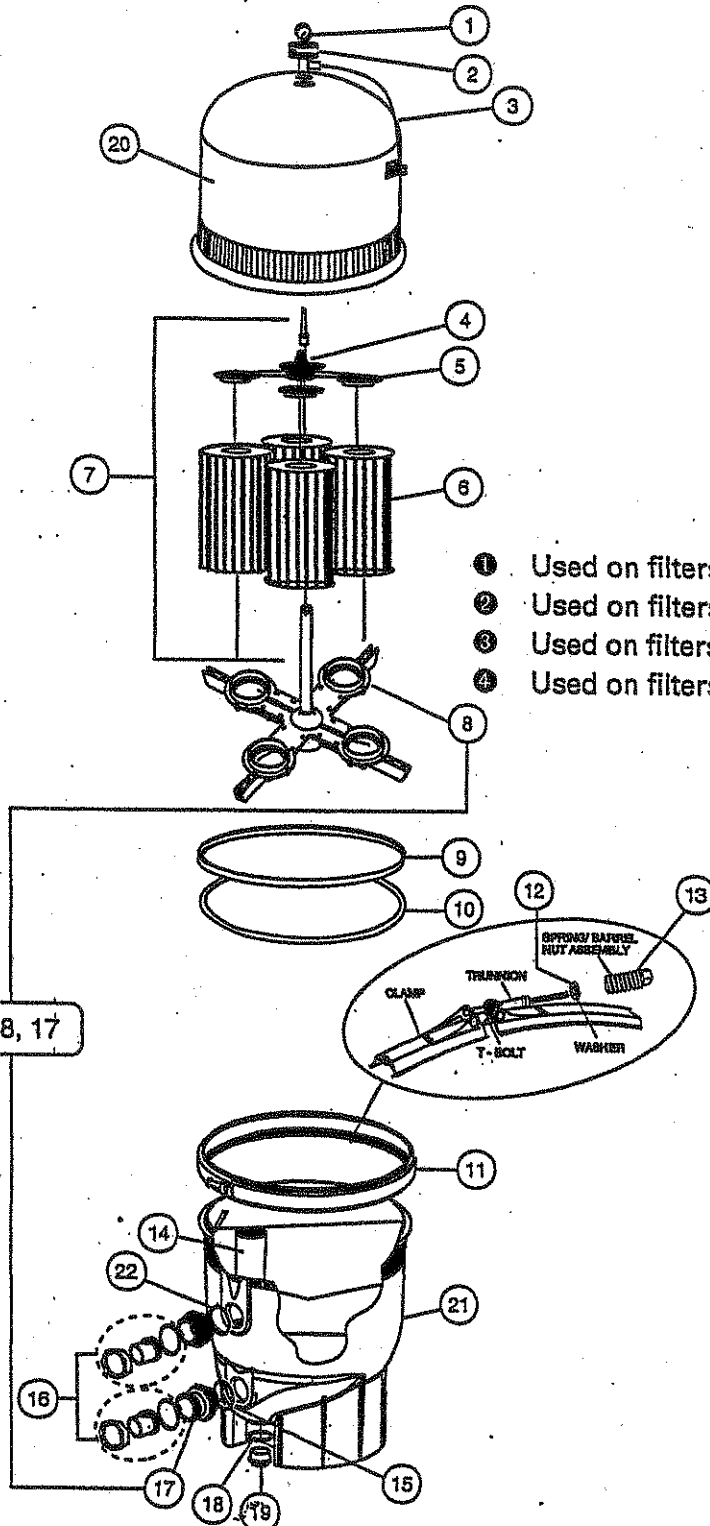
Northwest  
 6320 N Oracle Rd  
 520-797-2299 Phone  
 520-797-9293 Fax

Central  
 2512 N Campbell Ave  
 520-795-8240 Phone  
 520-327-1142 Fax

Main Office/Eastside  
 7960 E 22nd St  
 520-886-1211 Phone  
 520-886-6364 Fax

Northeast  
 9155 E Tanque Verde Rd  
 520-749-9155 Phone  
 520-760-0035 Fax

**PUREX CLEAN & CLEAR PLUS**  
 MODELS 240, 340, 360, 420, 500, & 520



- ① Used on filters manufactured before 11/98.
- ② Used on filters manufactured after 11/98.
- ③ Used on filters manufactured between 11/98 thru 12/00.
- ④ Used on filters manufactured after 12/00.

**Sierra Vista**  
 4711 S Highway 92  
 1-800-559-9291 Phone  
 520-458-9293 Fax



**COMMERCIAL POOL CARE DIVISION**

**Northwest**  
 6320 N Oracle Rd  
 520-797-2299 Phone  
 520-797-9293 Fax

**Central**  
 2512 N Campbell Ave  
 520-795-8240 Phone  
 520-327-1142 Fax

**Main Office/Eastside**  
 7960 E 22nd St  
 520-886-1211 Phone  
 520-886-6364 Fax

**Northeast**  
 9155 E Tanque Verde Rd  
 520-749-9155 Phone  
 520-760-0035 Fax

PATIO'S NUMBER	ITEM KEY	PUREX CLEAN & CLEAR PLUS MODELS 240, 360, 420, 500, & 520	MANUFACTURER NUMBER
SP1-8038 26-0409 TSC-0372	21 22 * *	Tank Bottom Assembly Tank Bottom Assembly Upper Bulkhead O-Ring, (O-409) Upper Bulkhead O-Ring Drain Plug Wrench Filter Lid Opening Wrench	1      178559 178578 192320 86006900 192019 10126
<u>* Items Not Shown</u>			
<p>1 - USED ON FILTERS MANUFACTURED BEFORE 11/98.          2 - USED ON FILTERS MANUFACTURED AFTER 11/98.          3 - USED ON FILTERS MANUFACTURED BETWEEN 11/98 THRU 12/2000.          4 - USED ON FILTERS MANUFACTURED AFTER 12/2000.</p>			