

Sierra Vista
 4711 S Highway 92
 1-800-559-9291 Phone
 520-458-9293 Fax



Northwest
 6320 N Oracle Rd
 520-797-2299 Phone
 520-797-9293 Fax

COMMERCIAL POOL CARE DIVISION

Central
 2512 N Campbell Ave
 520-795-8240 Phone
 520-327-1142 Fax

Main Office/Eastside
 7960 E 22nd St
 520-886-1211 Phone
 520-886-6364 Fax

Northeast
 9155 E Tanque Verde Rd
 520-749-9155 Phone
 520-760-0035 Fax

| PATIO'S NUMBER | ITEM KEY | PAC - FAB NAUTILUS D. E. FILTER - STAINLESS STEEL | MANUFACTURER NUMBER |
|-------------------|-------------|--|------------------------|
| 13-0336 | 1 | Automatic Air Relief Assembly | 261003 |
| 26-0083 | 2 | Bulkhead O-Ring, Requires 4 | 274494 |
| | 3 | Top Bulkhead Spacer | 273502 |
| | 4 | FNS Spacer | 273505 |
| 13-0356 | 5 | Internal Lock Nut - 2" | 154412 |
| | 6 | Shell Top NS24 | 188527 |
| | | Shell Top NS36 | 188528 |
| | | Shell Top NS48 | 188529 |
| | | Shell Top NS60 | 188530 |
| | | Shell Top NS72 | 188531 |
| 13-0570 | 7 | Manifold Grid - Complete | 192193 |
| | 8 | Retainer - 18" Dia.for O-Ring S/S | 152128 |
| | 9 | Grid - Partial NS24, Requires 1 | 59001000 |
| 13-0693 | | Grid - Partial NS36, Requires 1 | 59001700 |
| 13-0694 | | Grid - Partial NS48, Requires 1 | 59002300 |
| 13-0695 | | Grid - Partial NS60, Requires 1 | 59002900 |
| 13-0696 | | Grid - Partial NS72, Requires 1 | 59003500 |
| | 10 | Full Grid NS24, Requires 7 | 59001100 |
| 13-0603 | | Full Grid NS36, Requires 7 | 59001800 |
| 13-0604 | | Full Grid NS48, Requires 7 | 59002400 |
| 13-0605 | | Full Grid NS60, Requires 7 | 59003000 |
| 13-0606 | | Full Grid NS72, Requires 7 | 59003600 |
| | 11 | Grid Assembly - Complete NS24 | 192324 |
| | | Grid Assembly - Complete NS36 | 192325 |
| | | Grid Assembly - Complete NS48 | 192326 |
| | | Grid Assembly - Complete NS60 | 192327 |
| | | Grid Assembly - Complete NS72 | 195060 |
| | | Grid Pack w/O-Ring NS24 | 192340 |
| | | Grid Pack w/O-Ring NS36 | 192341 |
| | | Grid Pack w/O-Ring NS48 | 192342 |
| | | Grid Pack w/O-Ring NS60 | 192343 |
| | | Grid Pack w/O-Ring NS72 | 192344 |
| 26-0024 | 12 | O-Ring | 192323 |
| | 13 | Upper Piping Assembly NS24 | 194981 |
| | | Upper Piping Assembly NS36 | 194982 |
| | | Upper Piping Assembly NS48 | 194983 |
| | | Upper Piping Assembly NS60 | 194984 |
| | | Upper Piping Assembly NS72 | 194985 |
| 26-0184 | 14 | Tank O-Ring, O-184 | 152427 |
| | 15 | Manifold/Grid Retaining Rod, 5/16"x15-1/2", NS24, Req. 2 | 192182 |
| | | Manifold/Grid Retaining Rod, 5/16"x21-1/2", NS36, Req. 2 | 192183 |
| | | Manifold/Grid Retaining Rod, 5/16"x27-1/2", NS48, Req. 2 | 192184 |
| | | Manifold/Grid Retaining Rod, 5/16"x33-1/2", NS60, Req. 2 | 192185 |
| | | Manifold/Grid Retaining Rod, 5/16"x39-1/2", NS72, Req. 2 | 195002 |

Sierra Vista
 4711 S Highway 92
 1-800-559-9291 Phone
 520-458-9293 Fax



COMMERCIAL POOL CARE DIVISION

Northwest
 6320 N Oracle Rd
 520-797-2299 Phone
 520-797-9293 Fax

Central
 2512 N Campbell Ave
 520-795-8240 Phone
 520-327-1142 Fax

Main Office/Eastside
 7960 E 22nd St
 520-886-1211 Phone
 520-886-6364 Fax

Northeast
 9155 E Tanque Verde Rd
 520-749-9155 Phone
 520-760-0035 Fax

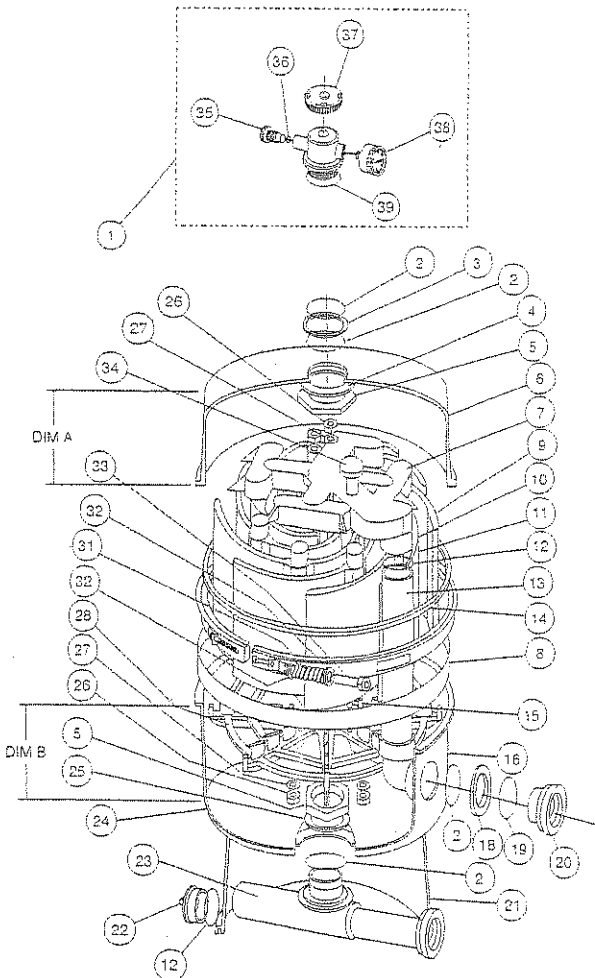
PAC-FAB NAUTILUS
 D.E. FILTER-STAINLESS STEEL

Product Change History

④ Filters manufactured before December 16, 1991 utilize a different tank top and bottom that is not interchangeable w/ current units. The correct replacement Part Numbers for filters manufactured before December 16, 1991 are:

| p/n | Description | Dimensions |
|--------|-------------------------|----------------|
| 192791 | Tank top w/ air relief | A = 17-3/8 in. |
| 192258 | Tank btm. | B = 18 in. |
| 194906 | Tank btm., ft. & piping | B = 18 in. |

⑤ Filters manufactured before April 1, 1992 contain a different clamp band assy. Replacement clamp band components are no longer available for these units. Replace old obsolete non-spring design clamp band w/ new spring design clamp band to upgrade your filter if any components are damaged. Spring design clamp bands do not require use of a torch wrench and simplify installation of the clamp. Do not attempt to interchange components between the different clamp band designs.



Sierra Vista
 4711 S Highway 92
 1-800-559-9291 Phone
 520-458-9293 Fax



COMMERCIAL POOL CARE DIVISION

Northwest
 6320 N Oracle Rd
 520-797-2299 Phone
 520-797-9293 Fax

Central
 2512 N Campbell Ave
 520-795-8240 Phone
 520-327-1142 Fax

Main Office/Eastside
 7960 E 22nd St
 520-886-1211 Phone
 520-886-6364 Fax

Northeast
 9155 E Tanque Verde Rd
 520-749-9155 Phone
 520-760-0035 Fax

| PATIO'S NUMBER | ITEM KEY | PAC - FAB NAUTILUS D. E. FILTER - STAINLESS STEEL | MANUFACTURER NUMBER |
|----------------|----------|--|---------------------|
| | 16 | Lower Shell NS24, NSP Tank Kit | 188527 |
| | | Lower Shell NS36, NSP Tank Kit | 188528 |
| | | Lower Shell NS48, NSP Tank Kit | 188529 |
| | | Lower Shell NS60, NSP Tank Kit | 188530 |
| | | Lower Shell NS72, NSP Tank Kit | 188531 |
| 26-0409 | 18 | External Spacer - 2" | 194893 |
| | 19 | Bulkhead O-Ring | 192320 |
| | 20 | Bulkhead Fitting | 194801 |
| 13-0329 | 21 | Lower Shell Foot NS/PF | 154722 |
| | 22 | Drain Plug - 2" | 195821 |
| | 23 | Lower Piping Assembly w/Drain | 194913 |
| | 24 | Shell Bottom NS24/NSP Tank Kit | 188527 |
| | | Shell Bottom NS36/NSP Tank Kit | 188528 |
| | | Shell Bottom NS48/NSP Tank Kit | 188529 |
| | | Shell Bottom NS60/NSP Tank Kit | 188530 |
| | | Shell Bottom NS72/NSP Tank Kit | 188530 |
| | 25 | Spacer - 2.8"x1/4" PVC | 154747 |
| | 26 | Nut - 5/16" - 16 S/S, Requires 4 | 192013 |
| | 27 | Washer - 5/16" - S/S Flat, Requires 4 | 72173 |
| | 28 | Grid Retainer | 192194 |
| | 31 | Tank Clamp Spring NS, Requires 2 | 194988 |
| | 32 | Washer, .890 o.d., .430 I.d., .164, Requires 2 | 53004800 |
| | 33 | Machined Nut, Requires 2 | 194989 |
| | 34 | Air Vent Strainer 3/4" | 172855 |
| | 35 | Bleeder Screw | 273512 |
| | 36 | Bleeder O-Ring | 273513 |
| | 37 | Cap (OBSOLETE) | 273501 |
| 13-0203 | 38 | Rear Mount Pressure Gauge | 155050 |
| 26-0083 | 39 | O-Ring (O-083) | 274494 |
| | | * Items not shown. | |
| | * | Wrench | 197082 |
| | * | Band Assembly Complete | 181011 |
| | * | Washer, .890 o.d., .430 I.d., .164, Requires 2 | 53006300 |
| | 1 | Complete grid assembly consists of items 7, 9, 10, 15, 27, 28, and 35 in correct quantities shown. | |
| | 2 | Grid pack consists of items 9, 10, and 12 in correct quantities as shown. | |
| | 3 | Used on filters manufactured after Dec. 1, 1991. | |