

Sierra Vista
4711 S Highway 92
1-800-559-9291 Phone
520-458-9293 Fax



COMMERCIAL POOL CARE DIVISION

Northwest
6320 N Oracle Rd
520-797-2299 Phone
520-797-9293 Fax

Central
2512 N Campbell Ave
520-795-8240 Phone
520-327-1142 Fax

Main Office/Eastside
7960 E 22nd St
520-886-1211 Phone
520-886-6364 Fax

Northeast
9155 E Tanque Verde Rd
520-749-9155 Phone
520-760-0035 Fax

PATIO'S NUMBER	ITEM NO.	RAYPAK GEMINI HEATER MILIVOLT MODELS 183 / 263 / 333 & 403	MANUFACTURER NUMBER
<u>PILOT GAS ASSEMBLY</u>			
012-6012	1	Pilot burner / electrode assembly (Electronic only)	002003F
012-6525	2	Pilot burner / generator assembly (Natural Gas, MV Only)	600525B
012-6084	3	Pilot generator cartridge (Q313A) (MV Only)	600019
012-6020	4	Pilot burner only (Natural Gas, MV Only)	002001F
	5	Pilot burner orifice (Natural Gas, MV Only)	600002
		Pilot tube (MV Only)	400349
	7	Pilot Bracket (MV Only)	305161
<u>MAIN GAS SYSTEM</u>			
	8	Gas Valve 3/4" x 3/4" Combo (Natural Gas, MV, 263/333/403)	600862
	9	Main burner (Stainless Steel)	301210
	10	Main burner orifice (Natural Gas)	350080
	11	Burner drawer only	58575F
		Burner drawer with burners, without pilot	58154
<u>ELECTRICAL SYSTEM</u>			
	13	Transformer (Electronic Only)	650531
	14	IID Ignition Control (Electronic Only)	600856
012-6892	15	High Limit 135	600892B
012-6893		High Limit 140	600893B
	16	Pressure switch	600025B
012-6827	17	Thermostat kit (MV Only)	600892B
	18	Thermostat knob (MV Only)	800201
SP1-7802	19	Toggle switch - 2 way (MV Only)	650500
		Toggle switch - 3 way (MV Only)	650563
<u>WATER SYSTEM</u>			
	21	Inlet/outlet cast iron header w/2 wells (183 thru 403)	002433F
	22	Return cast iron header (183 thru 403)	58165
012-6075	23	Header gasket (Set of 2) (153 Only)	800075B
012-6014	24	Tube seal gaskets (183 thru 403)	800014B
012-6013	25	Flange gasket (Set of 2, all models)	800013B
	26	Flange bolt 3/8" x 1-1/2" (183 thru 403)	
SP1-8256	27	Flange with gaskets & bolts kit (all models)	002432F
	28	Unatherm governor #E (183 thru 403)	B051492
	29	Heat exchanger, w/o heads (183)	002452F
		Heat exchanger, w/o heads (263)	002453F
		Heat exchanger, w/o heads (333)	002454F
		Heat exchanger, w/o heads (403)	002455F

Sierra Vista
 4711 S Highway 92
 1-800-559-9291 Phone
 520-458-9293 Fax



COMMERCIAL POOL CARE DIVISION

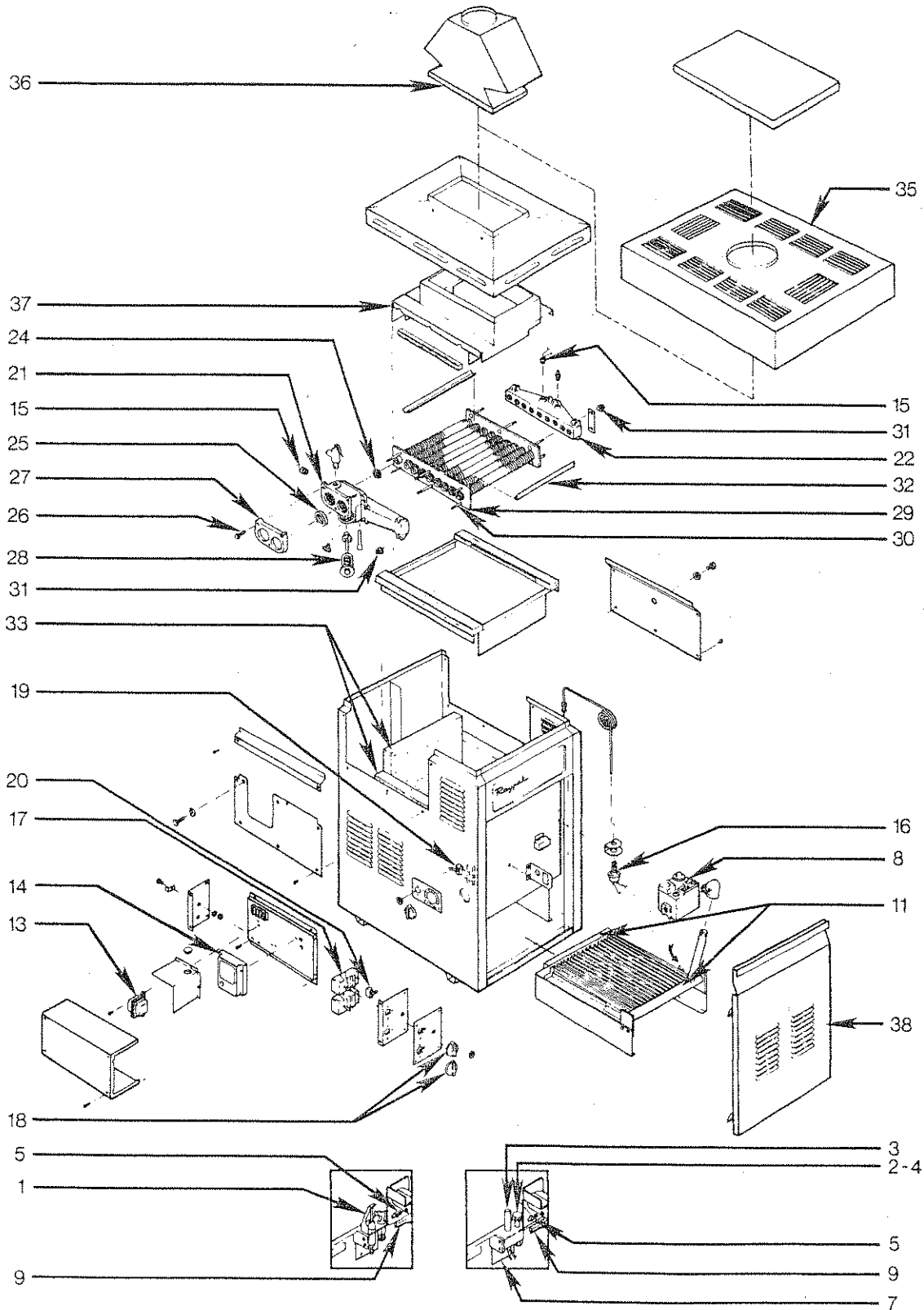
Northwest
 6320 N Oracle Rd
 520-797-2299 Phone
 520-797-9293 Fax

Central
 2512 N Campbell Ave
 520-795-8240 Phone
 520-327-1142 Fax

Main Office/Eastside
 7960 E 22nd St
 520-886-1211 Phone
 520-886-6364 Fax

Northeast
 9155 E Tanque Verde Rd
 520-749-9155 Phone
 520-760-0035 Fax

RAYPAC GEMINI HEATER
MILIVOLT MODELS 183 / 263 / 333 & 403



ELECTRONIC

MILLIVOLT

Sierra Vista
 4711 S Highway 92
 1-800-559-9291 Phone
 520-458-9293 Fax



COMMERCIAL POOL CARE DIVISION

Northwest
 6320 N Oracle Rd
 520-797-2299 Phone
 520-797-9293 Fax

Central
 2512 N Campbell Ave
 520-795-8240 Phone
 520-327-1142 Fax

Main Office/Eastside
 7960 E 22nd St
 520-886-1211 Phone
 520-886-6364 Fax

Northeast
 9155 E Tanque Verde Rd
 520-749-9155 Phone
 520-760-0035 Fax

PATIO'S NUMBER	ITEM NO.	RAYPAK GEMINI HEATER MILIVOLT MODELS 183 / 263 / 333 & 403	MANUFACTURER NUMBER
	30	Header bolt kit	001056F
		Header bolt kit	001303F
	31	Nut 3/8"	
	32	V - baffle kit (183 thru 403)	302503
		<u>FIREBOX</u>	
	33	Firebox complete (183)	001295F
		Firebox complete (263)	001296F
		Firebox complete (333)	001297F
		Firebox complete (403)	001298F
		<u>VENT & JACKET COMPONENTS</u>	
	35	Stackless top assembly (183)	#001663
		Stackless top assembly (263)	#001665
		Stackless top assembly (333)	#001669
		Stackless top assembly (403)	#001672
	36	Stack top assembly (183)	#001675
		Stack top assembly (263)	#001676
		Stack top assembly (333)	#001678
		Stack top assembly (403)	#001680
	37	Flue Collector (183)	#002070F
		Flue Collector (263)	#002071F
		Flue Collector (333)	#002072F
		Flue Collector (403)	#002073F
	38	Door (183)	#002074F
		Door (263)	#002075F
		Door (333)	#002076F
		Door (403)	#002077F
	39	Door latch assembly	#056524