

Sierra Vista
 4711 S Highway 92
 1-800-559-9291 Phone
 520-458-9293 Fax



Northwest
 6320 N Oracle Rd
 520-797-2299 Phone
 520-797-9293 Fax

COMMERCIAL POOL CARE DIVISION

Central
 2512 N Campbell Ave
 520-795-8240 Phone
 520-327-1142 Fax

Main Office/Eastside
 7960 E 22nd St
 520-886-1211 Phone
 520-886-6364 Fax

Northeast
 9155 E Tanque Verde Rd
 520-749-9155 Phone
 520-760-0035 Fax

PATIO'S NUMBER	ITEM KEY	PUREX "C" SERIES COMMERCIAL PUMP ALL MODELS - 50, 75, 100, 150, & 200	MANUFACTURER NUMBER
SPS-3839	1	Hand Nut Assembly - Bronze (Requires 2)	75280
	1A	C - Series Pot Assembly Complete	72747
SPS-3821	2	Strainer Cover - C16 Bronze	75275
	3	Strainer Cover O-Ring - C16	71433
	4	Pipe Plug 1/4" - Bronze	71551
	5	Strainer Pot - Bronze	75271
	6	Strainer Basket 11" - C29 S/S	72795
	7	Pump Volute C2 - Bronze	75273
	8	Flange Gasket, P-135-5"	70943
	9	Bolt, 3/4" #10x1-3/4" Hex Head S/S, P12 (Requires 2)	71683
	10	Coated Foot Pad, C4	75287
	11	Bolt, 5/8" #11x1" Hex Head S/S, (Requires 2)	71688
		<u>All Impellers are Bronze</u>	71037
	12	Impeller Locking Bolt, C35	71037
	13	Impeller Washer, C71	71048
	14	Impeller Washer Gasket	75713
	15	Impeller 5HP, 1PH & 3PH, High Head (CH50; CHK50; & CHKL50)	73828
		Impeller 5HP, 1PH & 3PH, Med. Head (CM50; CMK50; & CMKL50)	70228
		Impeller 7.5HP, 1PH & 3PH, High Head, CH75; CHK75; & CHKL75)	73829
SP1-8501		Impeller 7.5HP, 1PH & 3PH, Med. Head, CM75; CMK75; & CMKL75)	70227
		Impeller 10HP, 1PH & 3PH, High Head, CH100; CHK100; & CHKL100)	73830
		Impeller 10HP, 1PH & 3PH, Med. Head, CM100; CMK100; & CMKL100)	70226
		Impeller 15HP, 3PH, High Head, (CHK150 & CHKL150)	73831
		Impeller 15HP, 3PH, Med. Head, (CMK150 & CMKL150)	70225
		Impeller 20HP, 3PH, High Head, (CHK200 & CHKL200)	73832
25-0080	16	Pump Seal - C7 (PS360)	71725
SP1-8516	17	Brass Flange - C52	70906
26-0161	18	Flange O-Ring - C70, O-161)	71423
	19	Flange Bolt, 3/8" #16x3/4" Hex Head S/S, (Requires 2)	71681
	20	Water Slinger - C115	71685
	21	Impeller Key, 3/16"	71046
	22	Bolt, 1/2" #13x1-1/4" Hex Head S/S, (Requires 4)	71687
		<u>60 HERTZ MOTORS</u>	
	23	5HP, 1PH, 200/208V	357205
		5HP, 1PH, 230V	71366
		5HP, 3PH, 200/208V	357206
		5HP, 3PH, 220/440V	71364
		5HP, 3PH, 575V	N/A 357237
		7.5HP, 1PH, 200/208V	357207
		7.5HP, 1PH, 230V	N/A 357204
		7.5HP, 3PH, 200/208V	357208
		7.5HP, 3PH, 220/440V	71365
		7.5HP, 3PH, 575V	357247

Sierra Vista
4711 S Highway 92
1-800-559-9291 Phone
520-458-9293 Fax



COMMERCIAL POOL CARE DIVISION

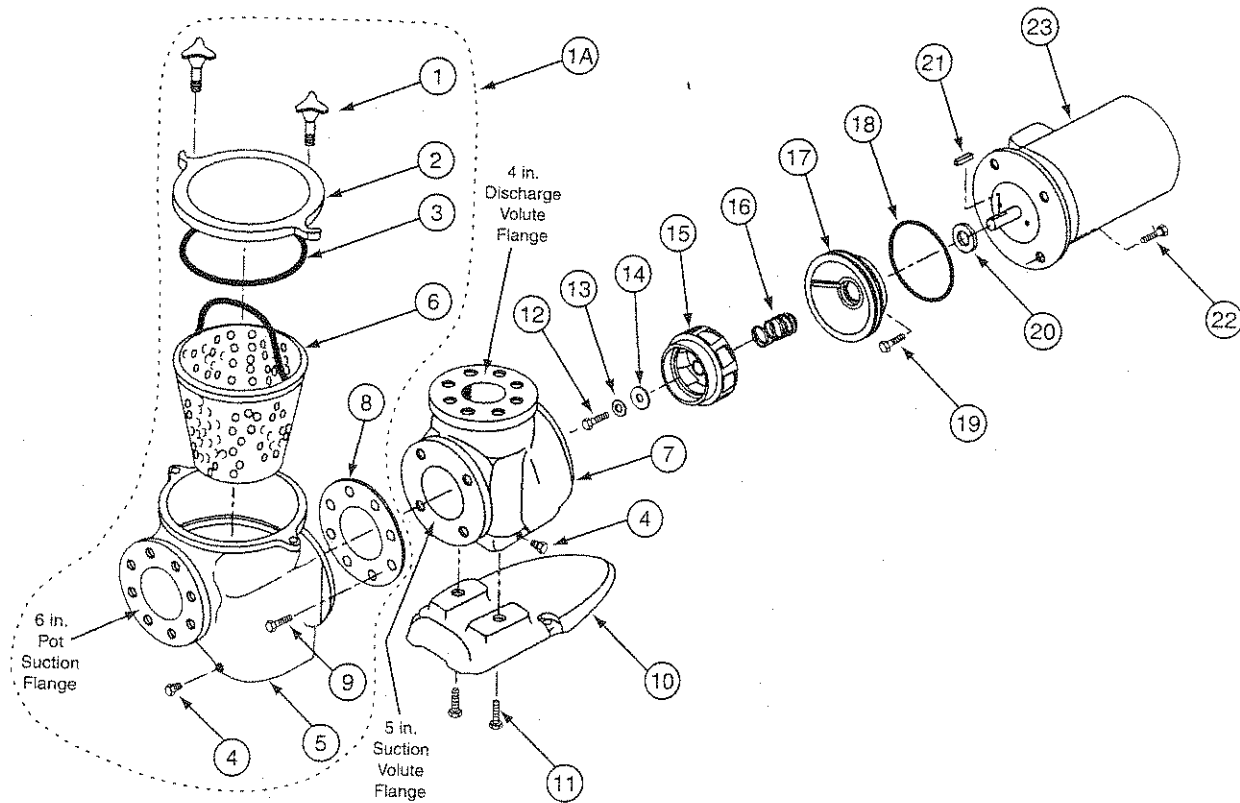
Northwest
6320 N Oracle Rd
520-797-2299 Phone
520-797-9293 Fax

Central
2512 N Campbell Ave
520-795-8240 Phone
520-327-1142 Fax

Main Office/Eastside
7960 E 22nd St
520-886-1211 Phone
520-886-6364 Fax

Northeast
9155 E Tanque Verde Rd
520-749-9155 Phone
520-760-0035 Fax

PUREX "C" SERIES COMMERCIAL PUMP
ALL MODELS - 50, 75, 100, 150, & 200



Sierra Vista
 4711 S Highway 92
 1-800-559-9291 Phone
 520-458-9293 Fax



Northwest
 6320 N Oracle Rd
 520-797-2299 Phone
 520-797-9293 Fax

COMMERCIAL POOL CARE DIVISION

Central
 2512 N Campbell Ave
 520-795-8240 Phone
 520-327-1142 Fax

Main Office/Eastside
 7960 E 22nd St
 520-886-1211 Phone
 520-886-6364 Fax

Northeast
 9155 E Tanque Verde Rd
 520-749-9155 Phone
 520-760-0035 Fax

PATIO'S NUMBER	ITEM KEY	PUREX "C" SERIES COMMERCIAL PUMP ALL MODELS - 50, 75, 100, 150, & 200	MANUFACTURER NUMBER
		<u>60 HERTZ MOTORS - (cont'd.)</u>	
	23	10HP, 1PH, 230V	357249
		10HP, 3PH, 200/208V	327509
		10HP, 3PH, 220/440V	71363
		10HP, 3PH, 575V	35238
		15HP, 3PH, 200/208V	357210
		15HP, 3PH, 220/440V	71361
		15HP, 3PH, 575V	357245
		20HP, 3PH, 200/208V	357211
		20HP, 3PH, 220/440V	71362
		20HP, 3PH, 575V	357246
		<u>50 HERTZ MOTORS</u>	
	23	5HP, 3PH, 380/415V	72737
		7.5HP, 3PH, 380/415V	72739
		10HP, 3PH, 380/415V	72740
		15HP, 3PH, 380/415V	72742
		20HP, 3PH, 380/415V	72744
		<u>MOTOR SUB-ASSEMBLIES - includes items #12 thru #23</u>	
		CMK50 - 60 Hertz, 220/440V, 3PH	73262
		CHK50 - 60 Hertz, 220/440V, 3PH	73265
		CMK75 - 60 Hertz, 220/440V, 3PH	73263
		CHK75 - 60 Hertz, 220/440V, 3PH	73266
		CMK100 - 60 Hertz, 220/440V, 3PH	73680
		CHK100 - 60 Hertz, 220/440V, 3PH	73267
		CMK150 - 60 Hertz, 220/440V, 3PH	73261
		CHK150 - 60 Hertz, 220/440V, 3PH	73268
		CHK200 - 60 Hertz, 220/440V, 3PH	73269
		CM50, 1PH, 230V	OBSOLETE
		CH50, 1PH, 230V	OBSOLETE
		CM75, 1PH, 230V	357910
		CH75, 1PH, 230V	357930
		CH75, 1PH, 200V	357935
		CH100, 1PH, 230V	357250
		CM100, 1PH, 230V	357251
		CMKL50, 3PH, 380/415V	14700
		CHKL50, 3PH, 380/415V	14801
		CMKL75, 3PH, 380/415V	14701
		CMKL100, 3PH, 380/415V	14702
		CHKL100, 3PH, 380/415V	14803
		CMKL150, 3PH, 380/415V	14703
		CMKL150, 3PH, 380/415V	14805